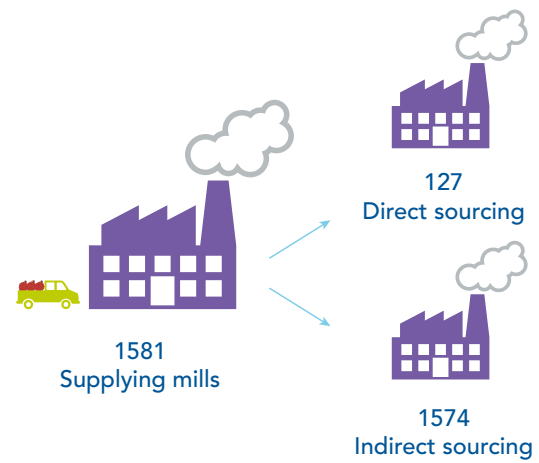


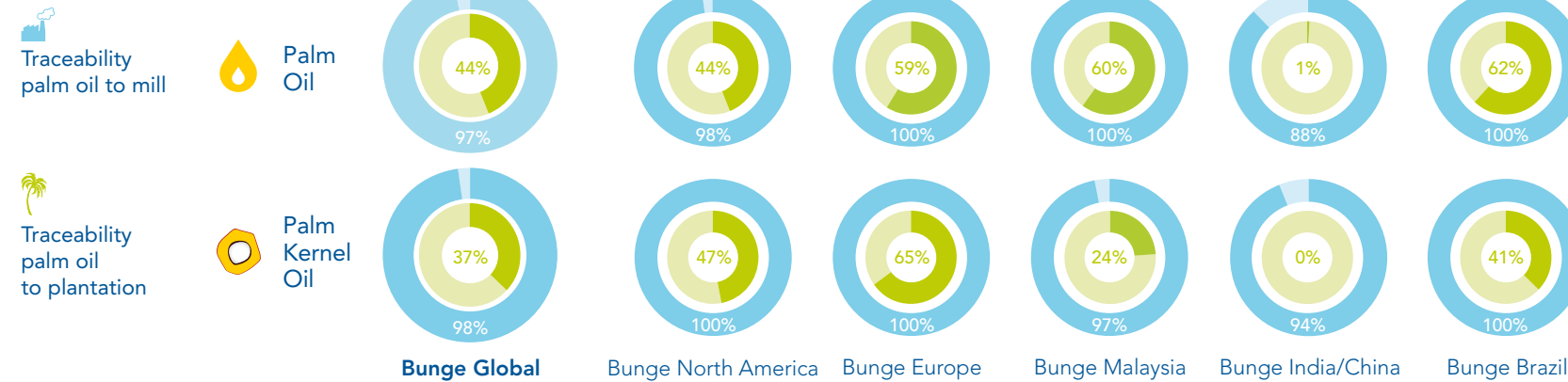
Palm Oil Dashboard



Transparency



Traceability Numbers*



Impact

- JULY 2019 [Smallholder Support Program \(ILHAM\) Update](#)
- MAY 2019 [Smallholder Support Program Update](#)

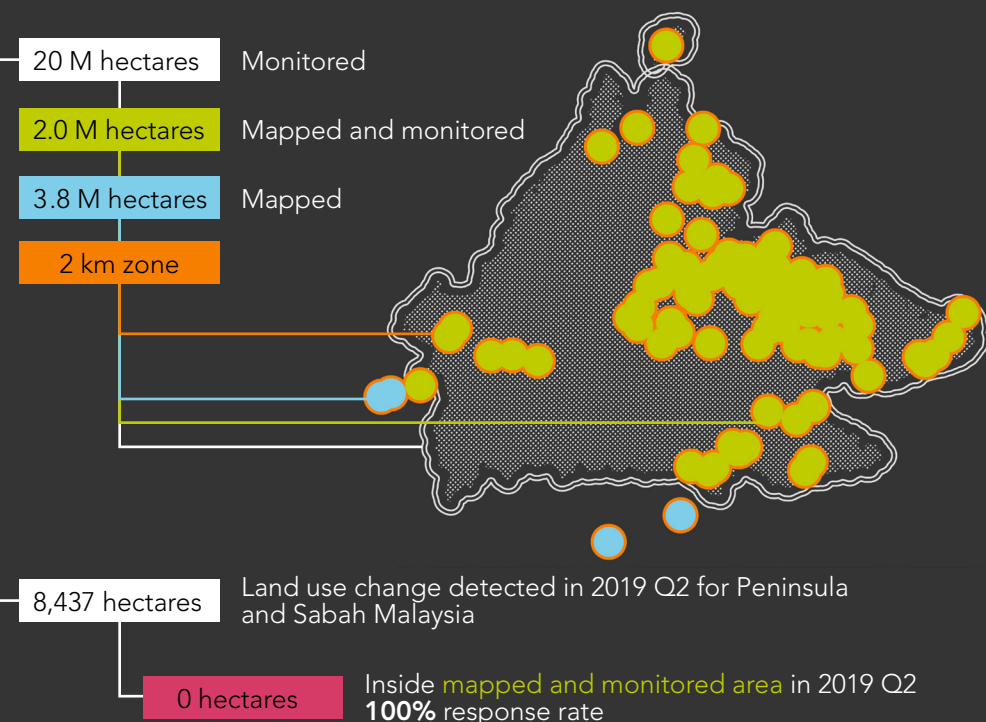
Latest News

- JULY 2019 [Joining the Sustainable Palm Oil Choice Europe](#)
- [Take a Look at our Interactive Palm Oil Sustainability Storymap](#)
- MAY 2019 [Bunge Loders Croklaan Sustainability Newsletter](#)
- [Traceability Process Verified by Independent Third Party](#)
- APRIL 2019 [Bunge Reply to Greenpeace Letter - April 17, 2019](#)

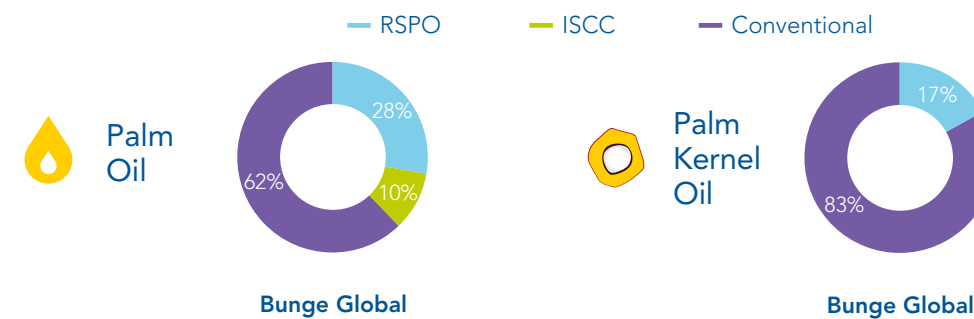
Verification

Land use change alerts in relation to mapped concessions by area*

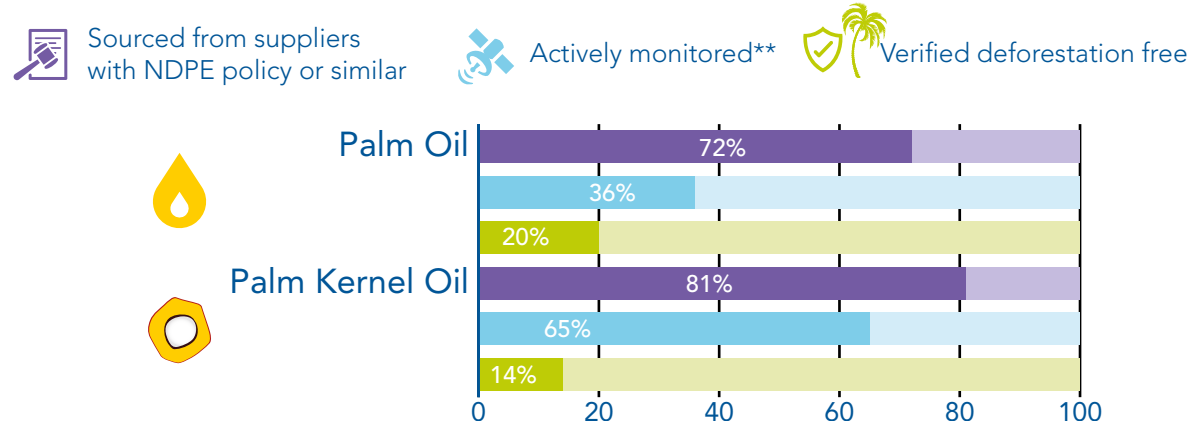
Example of Sabah region
* Colored areas on the map do not represent actual sizes/locations



Certified Volumes Sourced (market driven)*



Volumes Sourced*



Links

- [Sustainable Palm Oil Policy](#)
- [Grievance List](#)
- [Mill Lists](#)
- [Joint Overarching Report Sabah](#)
- [Bunge's road to 2020 NDPE commitments](#)
- [Bunge Loders Croklaan Palm Sustainability Activities](#)

* Numbers from April 2019 - June 2019. ** Monitored by Satelligence via optical and radar satellites. Reporting of Land Use Change alerts on bi-weekly basis.